

Keyboard User Guide



2D Keyboard

2D KEYBOARD & KEY GUARD

PCD Maltron Keyboards

Important contact information for sales & service:

Manufacturer & Supplier

PCD Maltron Ltd

Castlefields

Stafford

ST16 1BU

ENGLAND

Tel: +44 (0) 845 230 3265

Fax: +44 (0) 845 230 3266

Email: sales@maltron.co.uk

Web: www.maltron.com

Key Guard

A key guard is supplied with this keyboard to prevent accidental key strokes arising from spasticity or some other problem.

Key Guard fitting

The key guard is attached by means of two Velcro straps fixed to both sides through the strap location holes and joined at the back.

Setting up your Maltron Keyboard

The USB cable supplied loose with the keyboard will need to be connected. It has a standard USB (Universal Serial Bus) Type A plug at each end. It should be plugged in to the socket on the keyboard. Connect the other end into a USB socket on the computer and arrange the keyboard to suit your preferred position.

Please ensure this allows you to sit comfortably, with the keyboard close and low enough for your upper arms to be hanging vertically from your shoulders, and your forearms to be horizontal.

After plugging in the Maltron keyboard, switch on the computer. The keyboard should light up with a green light – indicating that the keyboard has power.

The keyboard is ready to use.

It is recommended before using the keyboard you study the following posture guidance information and also familiarise yourself with our free on line training modules at www.maltron.com.

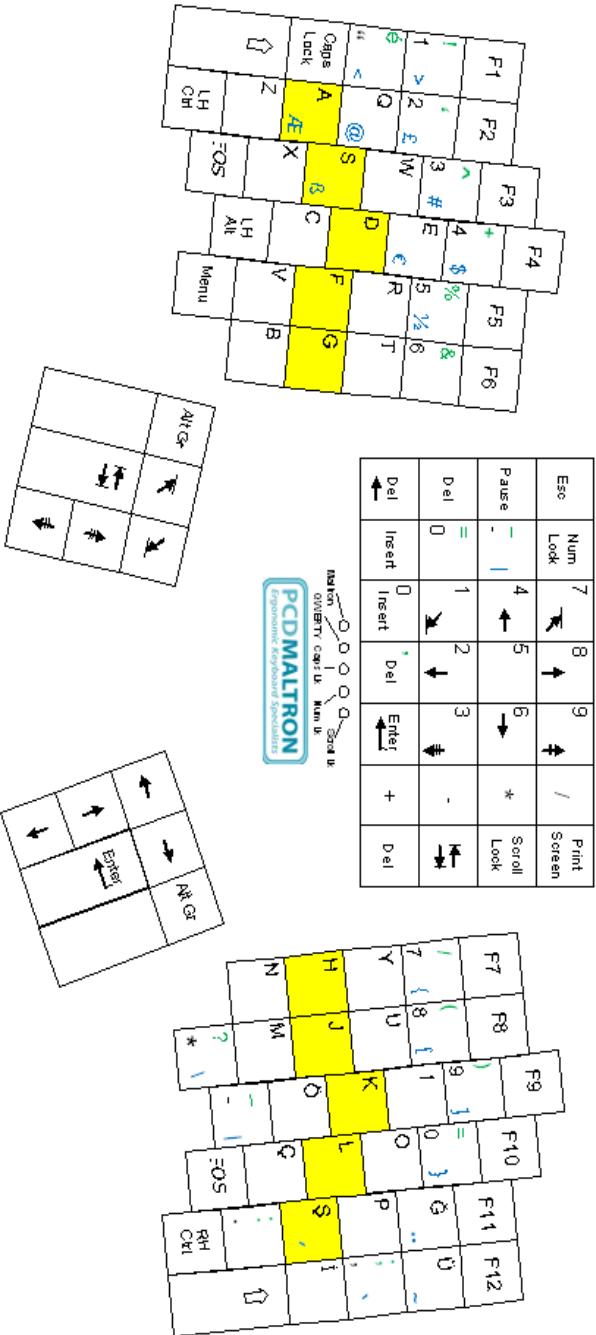
THERE ARE NO SOFTWARE DRIVERS TO INSTALL



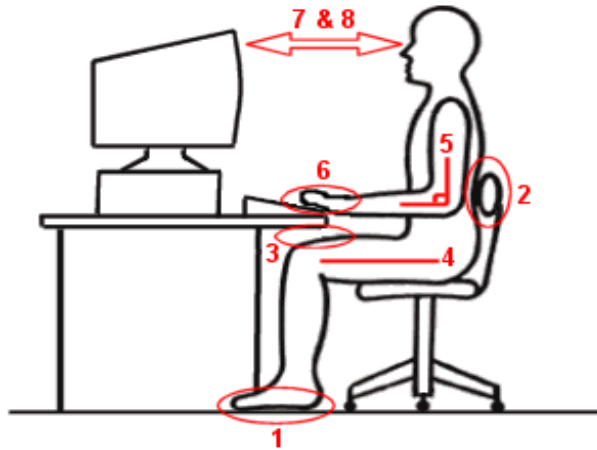
TURKISH MALTRON DUAL HANDED 2D KEYBOARD LAYOUT

14-9-11

Blue = Alt GR
Green = Shift



Posture Guidance



Key Features

1. Feet flat on floor or on a foot rest
2. Backrest supporting lumbar area
3. Sufficient leg room under desk
4. Thighs parallel to the floor
5. Upper arm at right angle to lower arm
6. Neutral wrist position
7. Top of monitor at or slightly below eye level
8. Monitor at arm's length distance

The 2D Ergonomic Keyboard



L.E.Ds 1 2 3 4 5

Indicators

There are 5 LED indicators grouped centrally below the number pad on the keyboard. These indicate keyboard settings.

LEDs from left to right

1. Maltron layout (Not available)
2. Qwerty layout/Power Indicator
3. Caps Lock
4. Number Lock
5. Scroll Lock

Reporting faults

If you are unable to resolve a fault please contact your I.T. support staff who in turn will contact the supplier.

Maltron keyboard Warranty

Please refer to the technical guide for assistance

Setting up your Workstation

It is important to set up your workstation correctly, and that you are able to work in a position which is comfortable and which does not place your long-term health at risk.

Sitting in a slumped position can cause back pain, even long-term injury. Therefore adopt a "neutral" position to avoid placing unnecessary strain on the nerves, muscles, tendons, ligaments and bones. You may wish to ask a colleague to check a side view as it may be difficult to judge for yourself, especially as the correct set-up may feel odd at first.

Eyes should be level with the top of the monitor screen.

Elbows should be level with the top of the keyboard, allowing arms and hands to be horizontal.

Seat height should allow feet to rest flat while maintaining 90 ° angles at hips.

Many people have their chair too high and the monitor too low. If after adjustment, the undersides of your thighs are compressed, you may require a foot rest. Adjust the backrest so that it supports your lower back. Remove armrests if they get in the way.

A suitable adjustable monitor arm will allow you to alter the height and tilt of the screen, and meet the recommended distance of screen to eye (22-26" or 50-70cm). Closer than this will cause eye strain. Correct tilting will help eliminate glare.

Reposition items on your desk to avoid reaching and twisting. There should be nothing between you and the keyboard. Use a document holder if you refer to documents while typing. This should be positioned at the same height and distance as your monitor.

Your mouse should be positioned close to the keyboard too and if you have a phone on the desk place it on the non writing hand side of the workstation.

Ensure adequate breaks are taken, don't sit in the same position for long periods.

Hand and Key position information

The unusual shape of the Maltron keyboard often gives rise to questions concerning how to place the hands to take advantage of the strain free design. The best way to assess this is to do the following actions:

1. Either standing or seated, allow both arms to fall totally relaxed by the sides
2. Open and close the hands 2 or 3 times and then allow them to be totally relaxed
3. Look at the finger shape. Usually seen in the half open position the finger end directions now lie at 70-90 degrees from the forearm axis, with the wrists still totally relaxed.
4. Keeping the hands in this position, raise the forearms to be horizontal, and position the hands so that there is a distance of roughly 20cms between the index fingers.
5. Opening and closing the fingers now shows that the ends move in arcs of different radius.
6. As far as possible the keys have been positioned to fit these, so that lowering the hands on to the keys should give comfortable finger positions on the ASDF on the left and the JKL keys on the right. The thumbs should be relaxed to fall on the Space keys.
7. The back of the hands will also be tilted to give angles of about 30 degrees to the horizontal, and a strain free wrist

position.

8. When keying, the palms should be around 1cm above the resting pads, but at any pause for "thinking" time they should be lowered on to the pads immediately, and the hands and arms relaxed.

Training

We strongly recommend **that** anyone using a Maltron keyboard for the first time **should** read and follow the **FREE** online training module by going to www.maltron.com and selecting the 'TRAINING' tab.

If you are unable to access the online training, we are happy to provide a paper based version of the training guide, this may be freely copied. Please contact the office by email if necessary:
Email – sales@maltron.co.uk

Service and Maintenance Information

Common Problems

1. When using your keyboard for the first time, make sure the computer is plugged into an AC power source !
2. Make sure your keyboard is securely plugged into a PC/ Laptop, turned on and the power indicator light is lit. Check that pressing the Num Lock key turns the Num Lock light on or off. This confirms communication between the keyboard and the computer. Note: The Left hand light is not used on the 2D dual hand keyboard.
3. If it is necessary to check operation in detail disconnect any other USB devices and then restart your computer. Select a word program and test letter and number key operation.